

Operating Instructions



Wi-Fi Transmitter

Please read this manual thoroughly before operating the unit,
and keep it for future reference.

V1.1

Contents

1. Precautions	1
2. Instructions for Wi-Fi Transmitter	4
2.1 Product Features	4
2.2 Product Introduction	5
2.3. Technical Specifications	6
3. App Instruction(Android).....	7
3.1 Software Installation	7
3.2 WI-FI Connection	8
3.3 Software Operation	9
3.4 Software Update of Camera	20
3.5 APP Update	24
4. App Instructions (for iOS)	27
4.1 Software Installation	27
4.2 Wi-Fi Connection	28
4.3 Software Operation	29
4.4 Camera Software Update	31

1. Precautions

● Storage and Keeping

- 1) Do not expose the transmitter to excessive heat or cold. The storage temperature of this device is $-40\sim+80^{\circ}\text{C}$, and the operating temperature is $-20\sim+70^{\circ}\text{C}$. The humidity is RH95%
- 2) Never use this device near a bathtub, wash basin, kitchen, damp basement, swimming pool or similar places.
- 3) Never use this device in environments with excessive moisture, dust or smoke.
- 4) Avoid dropping or striking this device.
- 5) Avoid using this device in enclosed spaces, areas with excessive vibration or subject to severe impacts.
- 6) Never puncture, scratch or use abrasive cleaning materials on this device.
- 7) Leave at least a 2" space between the transmitter and walls, cabinets or other objects to allow adequate air circulation around the device.

● Operating Precautions

Use 10~32V DC power supply to power the transmitter.

Warning!



Do not disassemble the equipment during use at will.

Special Notice

Since the Wi-Fi device is easily disturbed by the surrounding signals during the use process, when the signal interference is large, the video transmission may not be smooth, which is a common phenomenon. Please try to ensure that the surrounding signal interference is small.

● Maintenance

- 1) Remove all the cable connections from the transmitter before cleaning the device.
- 2) Use a mild household detergent and clean the unit with a slightly damp, soft cloth.
- 3) Never use strong solvents such as thinner or benzine, as they might damage the finish of the device.

	Caution	
	Risk of electric shock Do not open	
<p>Caution: to reduce the risk of electric shock, Do not remove cover (or back). No user-serviceable parts inside. Refer servicing to qualified service personnel.</p>		



This symbol is intended to alert the user to the presence of uninsulated "dangerous voltage" within the product's enclosure that may be of sufficient magnitude to constitute risk of electric shock to persons.



This symbol is intended to alert the user to the presence of important operating and maintenance (servicing) instructions in the literature accompanying the appliance.



This symbol is intended to alert the user not to dispose of electrical and electronic equipment.

CAUTION

You are cautioned that any changes or modifications not expressly approved in this manual could void your warranty and necessitate expensive repairs.

2. Instructions for Wi-Fi Transmitter

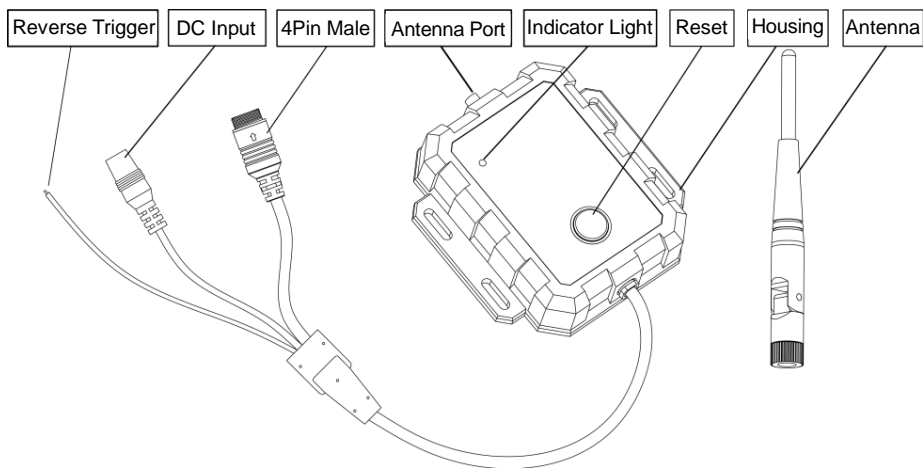
2.1 Product Features

- 1) Power supply: 10~32V.
- 2) Input video signal: AHD, TVI, CVI, 720P/1080P and CVBS
- 3) Operation frequency: 2.4GHz-2.4835GHz .5.12GHz-5.825GHz
- 4) Client-side applications support recording, playback, snapshot, hotspot frequency switching, parameter settings and software update.
- 5) IP Rating: IP69K
- 6) Working temperature: -20 ~ + 70°C
- 7) Double-click the “RESET” button twice to reset the transmitter to default settings (When first double-clicking the button, the red and the green lights alternately flash slowly (into a state of requesting confirmation: timeout and return to working state after 3 secs without follow-up operation). Double-click the button again within 3 secs (in the state of requesting confirmation) to reset the transmitter, and after the red, yellow and green lights alternately flash quickly, it returns to working state.) .

2.2 Product Introduction

Storage Temperature	-40 ~ 80°C
Waterproof Rating	IP69K
Dimension	105*106*25.2 (mm)
Weight	325 g
Input Video Signal	CVBS / AHD / TVI / CVI
Operation Frequency:	2.4GHz-2.4835GHz . 5.12GHz-5.825GHz
Transmit Output Power	20 dBm
Receiving Sensitivity:	-89 dBm
Transmitting Distance(Barrier-free)	60m
Video Codec:	H.264
Video Resolution	720P / D1 / CIF
Frame Rate:	2~30f/s
Audio Format	G.711A
Spread SPECTRUM:	IEEE 802.11b/g/n
Defer time	400ms

2.3. Technical Specifications



3. App Instruction(Android)

3.1 Software Installation

Please download and install the software “StreamVis” in the Google Play Store.

“StreamVis” software icon



Or install the application by entering the following link address or scanning the QR code on your mobile phone:

http://183.233.190.23:6061/tmp/android/StreamVis_install_1.5.5.19082



3.2 WI-FI Connection

Methods / Steps:

Use a 10V~32V DC power supply to power the camera to ensure that it is in normal working condition.

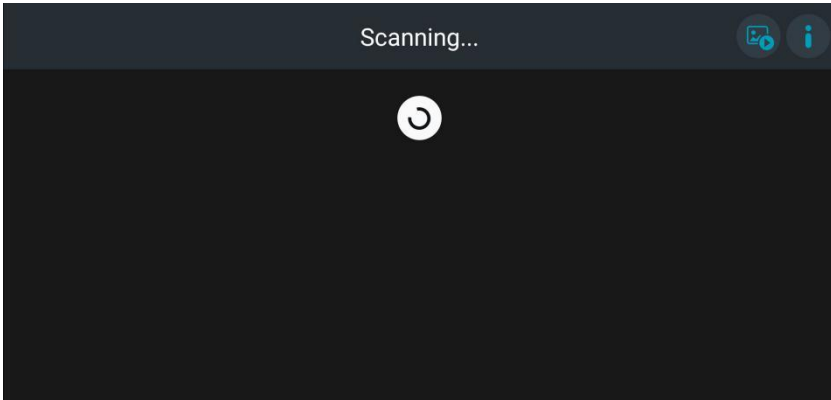
Wireless Transmitter hotspot name: WFT-XXX



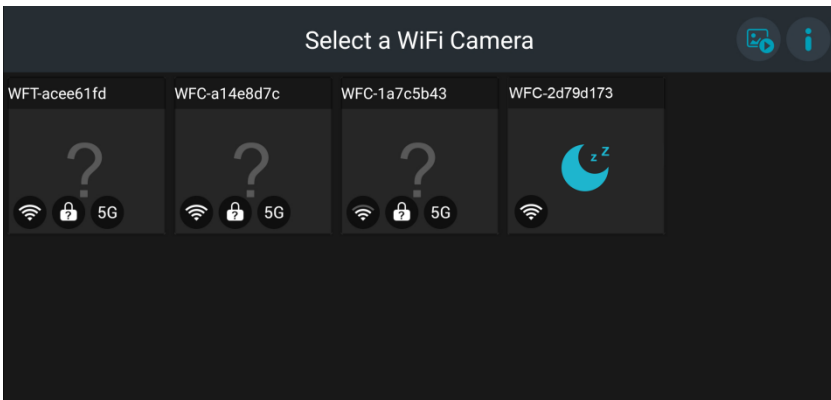
3.3 Software Operation

Method:

Open “StreamVis” on the smartphone and enter into the scanning interface.

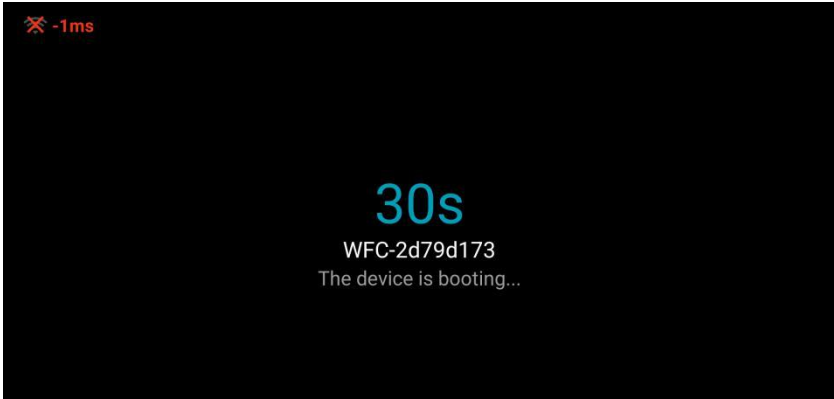


The App will scan the surrounding Wi-Fi devices, which will be displayed in the form of thumbnails. Select the corresponding device for quick connection.

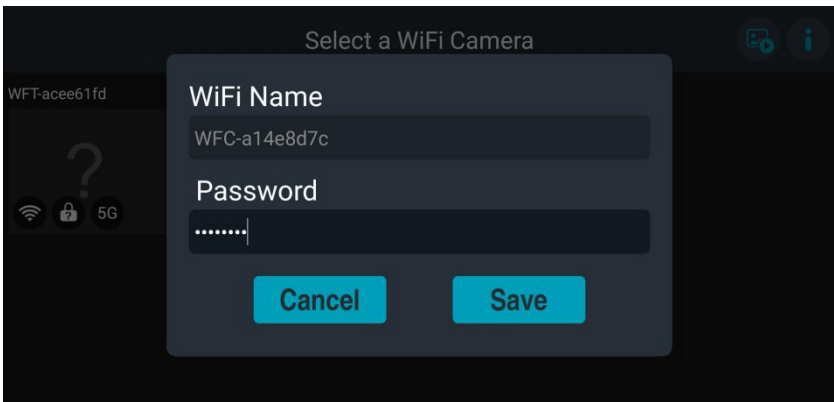




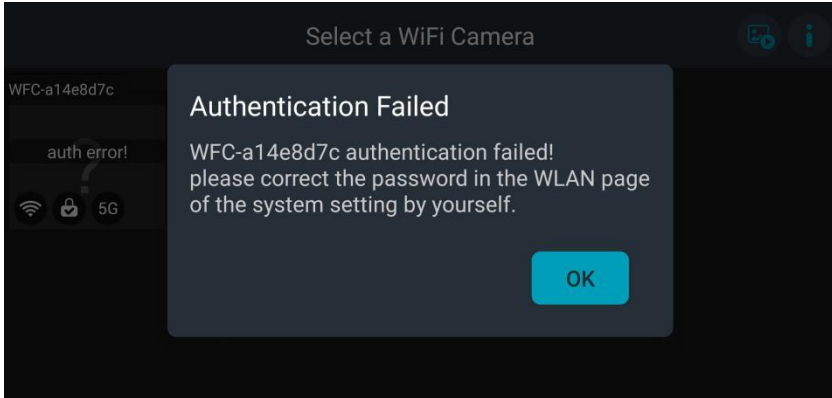
The scanned Wi-Fi device with this icon displayed is a bluetooth device. Touch the thumbnail to wake up the device and it will be connected in 30 seconds.



Enter default password 88888888 and save to connect.



Wrong password will lead an authentication error window to pop up. Touch “OK” to jump into the smartphone network setting to modify the hotspot and enter the correct Wi-Fi password.





After connecting successfully, the user will enter the main interface.



Gently tap the screen and the main configuration will be displayed.



 Wi-Fi signal bar indicates the strength of the signal, the higher the level, the stronger the signal. the data indicates the transmission latency, the smaller the data, the smoother the video. When the latency is above 200ms, the signal icon and data will show a red alarm.

 Touch the reversing cursor icon and it will show the reversing distance cursor. The reversing cursor is set to off by default.

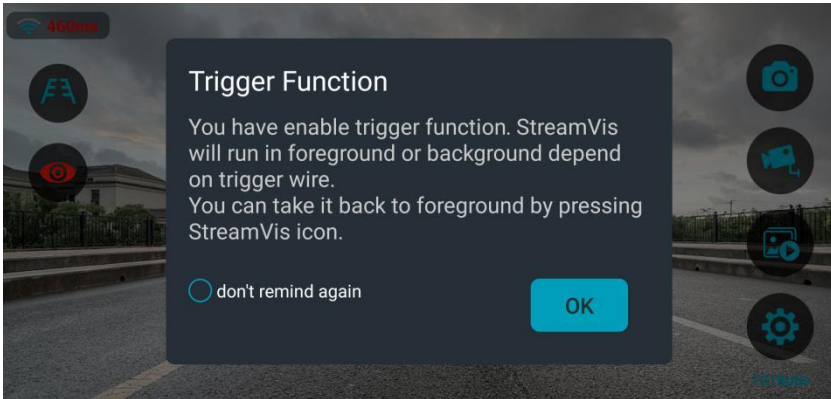




When “StreamVis” accesses the device with trigger function, touch the trigger control icon and it will turn red to work, and the app switches to the homepage. Once detecting the trigger signal, the app will go back to the preview surface, if the trigger signal is disconnected, the app switches to the homepage.

When the trigger function turns on, a tip window will pop up as below, touch “OK”.

Note: If the trigger function is not working properly, please allow the mobile system to enable the background running permission of “StreamVis”.

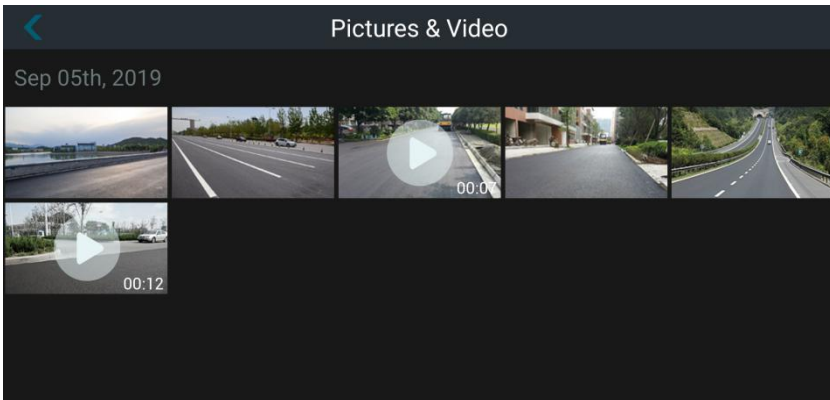


Touch recording icon to start recording, the icon will be red. Touch it again to stop recording and the icon will be in standard color. The recording will be saved in the album automatically.

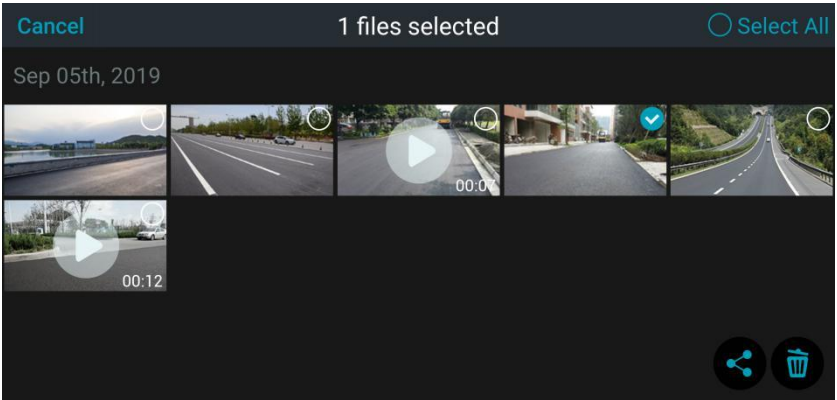
Permission needs approval on the first time you use capture and record function.



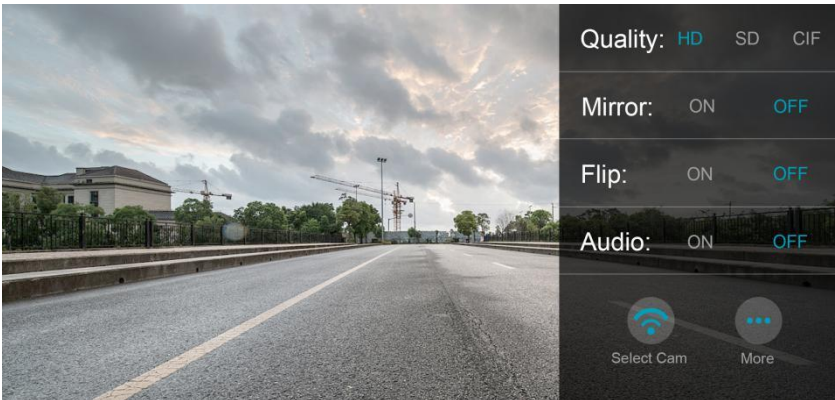
Touch “Album” to enter the interface of pictures and videos. Pictures and videos are grouped by date in the form of thumbnails. There is a “Playback” icon on the video thumbnail to distinguish them from the pictures. The duration of the video is shown on the lower right corner. A progress bar will appear at the bottom of the screen during video playback, and the progress bar can be dragged. Users can slide left and right when previewing album files. File saving time is shown on the file name.



Touch “Album” to enter the interface of pictures and videos. Press and hold the file thumbnails to enter file selection mode, which will show the check boxes. Tick “Select All” on the top right corner to select or cancel all files. When a file is selected, the number of selected files will be displayed at the top of the screen and files can be deleted or shared by clicking the corresponding icons on the lower right corner (Note: video sharing is not supported. If videos are selected, the “Share” icon will turn into gray). Press “Cancel” to exit file selection mode.



Touch “Settings” icon to enter the interface of main settings.

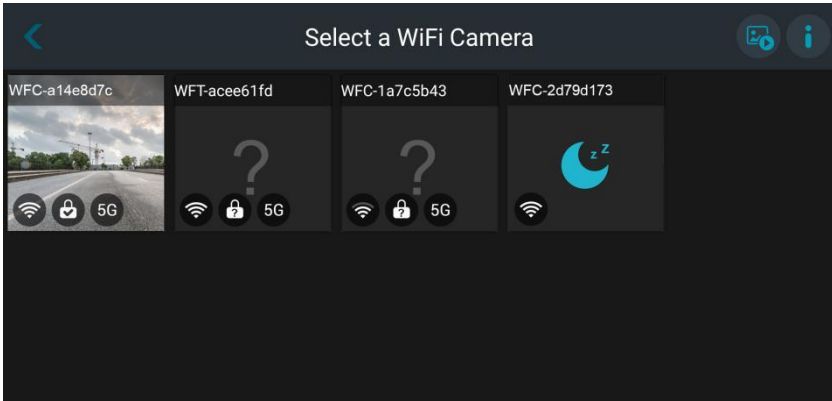


Detailed configuration options are described as below:

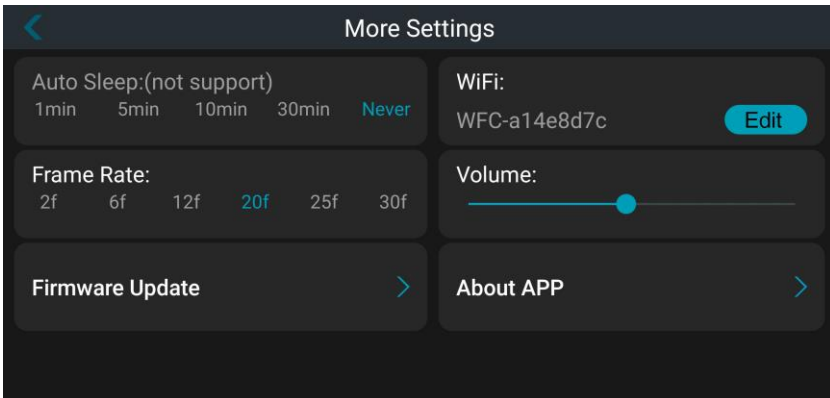
- Quality: HD(1280*720) SD(704*480) CIF(352*240)
- Mirror: ON OFF
- Flip: ON OFF
- Audio: ON OFF



After logging in to the wireless devices, Touch “Select Cam” to enter the scanning interface. In this interface, current image of connected devices can be captured so that the users can quickly find target device based on the captured image.

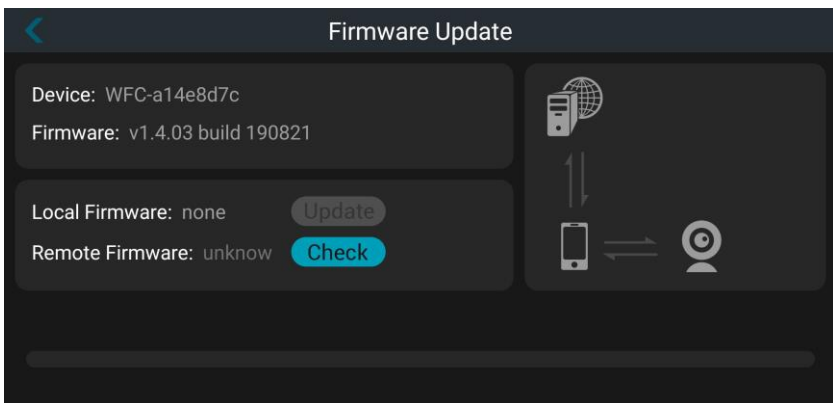


The “More Settings” interface supports more configurations



Detailed configuration options are described as below:

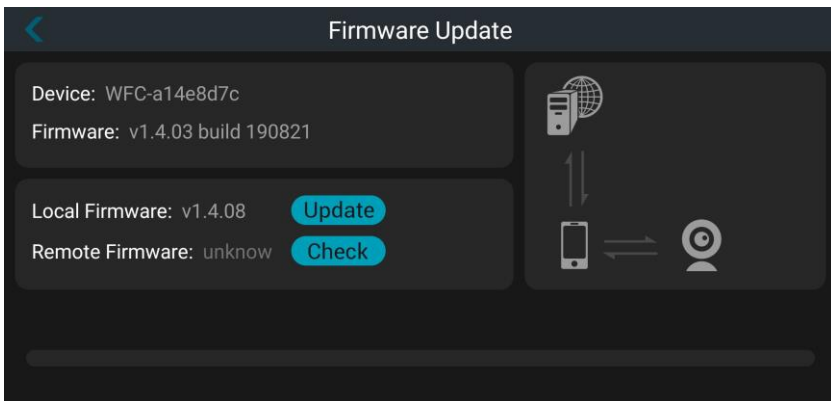
- **Auto Sleep:** configure automatic sleep time for low-power Bluetooth devices. The control time to enter the low-power state can be set to 1min, 5mins, 10mins, 30mins or Never. (Devices will enter low-power state after selected auto sleep time if there is no communication between the devices and APP). For non-Bluetooth devices, “not support” will be shown and auto sleep time defaults to “Never”.
- **Frame Rate:** configure video frame rate. Default is 20fps, with options 2fps, 6fps, 12fps, 20fps, 25fps and 30fps.
- **WiFi:** Touch “Edit” to change Wi-Fi name or password, or to choose frequency band. Check the box before “Password” and “Save” to enable encryption mode for hotspot of wireless device. Uncheck the box before “Password” and “Save” to disable the encryption mode.
- **Volume:** drag volume control bar to set volume.
- **Firmware Update:** Current firmware version can be checked in the “Firmware Update” interface. Please refer to 3.4 “Camera Firmware Update” for more details.



Steps for firmware update are as below:

1) If there is a new firmware package downloaded to local path, touch “Update” to update the firmware automatically (network must be available).

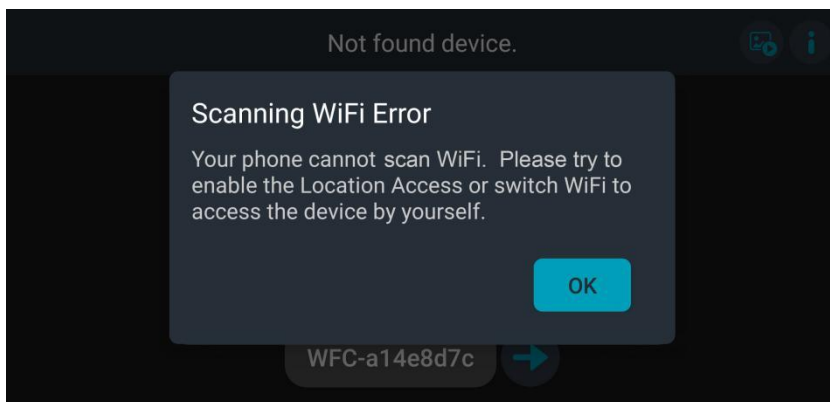
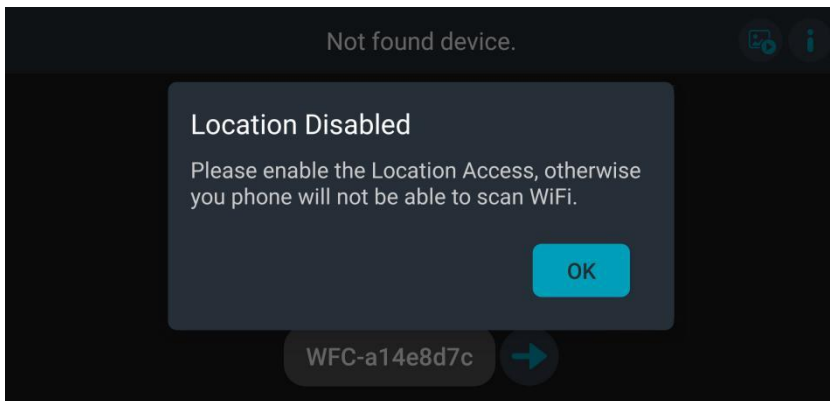
2) Touch “Check” to find and download the new firmware to local path, then touch “Update” to update the firmware automatically (network must be available). There will be a prompt “Firmware Update Successful” for a successful update. Pay attention to the communication status of the network link on the right side of the screen.



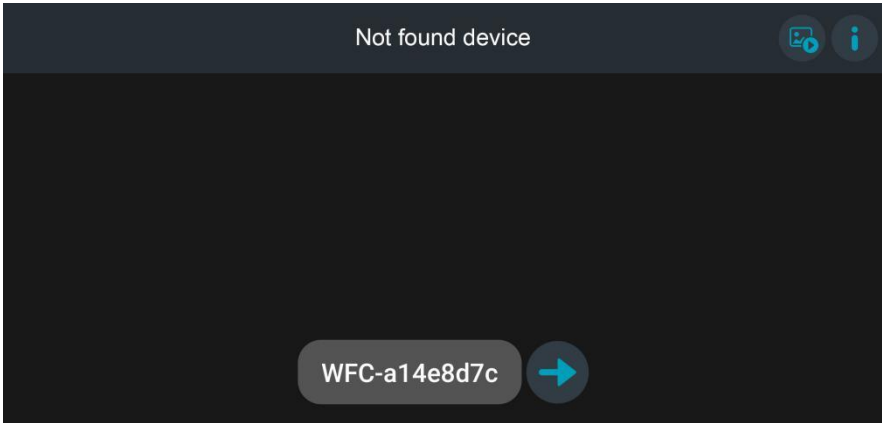
- About StreamVis: APP version and detailed information on “StreamVis”, Please check chapter 3.5, StreamVis Update.

Note: It requires to enable authorities, such as location, save, read & write authorities of your mobile phone to ensure StreamVis’ normal operation, please enable the reminded to-be-enable authority.

“StreamVis” will not be able to access to Wi-Fi auto-search if location authority is not enabled, nor can it scan surrounding wireless devices. It will remind that the authority of location acquisition is not enabled, please touch “OK” to enable it on the mobile location authority setting interface.

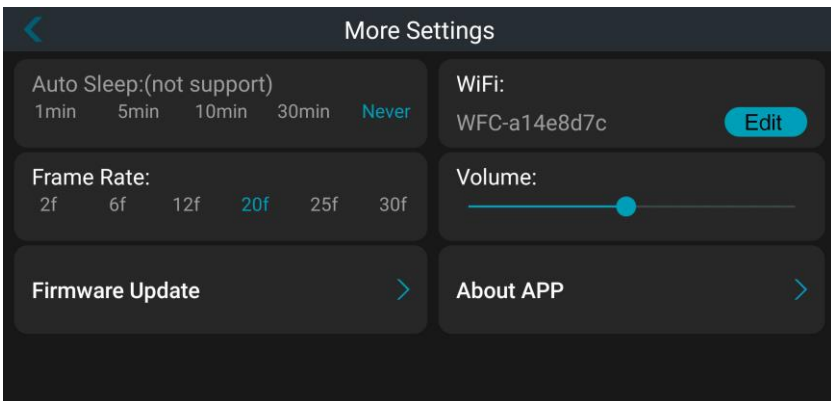


If you refuse to enable location authority, please touch other places of the screen instead of touch “OK” button and see below interface. You will need to touch the Wi-Fi AP name and skip to Internet setting interface to connect the corresponding Wi-Fi hotspot manually.

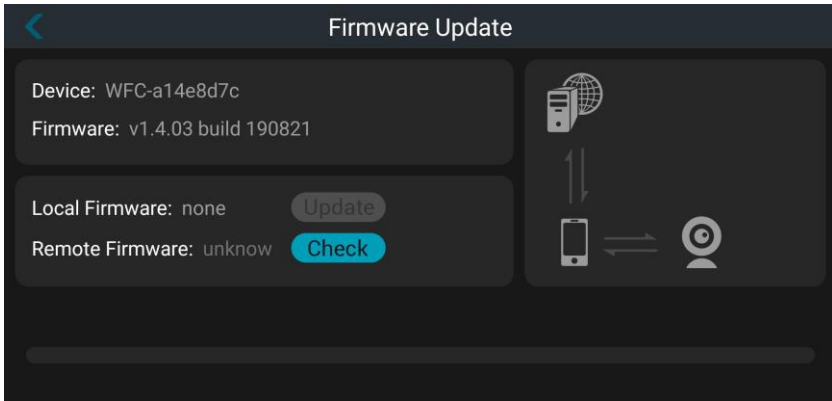


3.4 Software Update of Camera

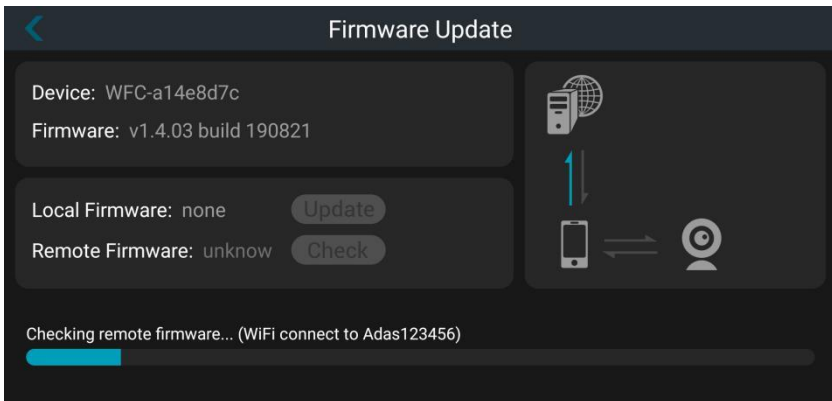
Open “StreamVis” and enter “More Settings”.



Select “Firmware Update” and enter the interface.



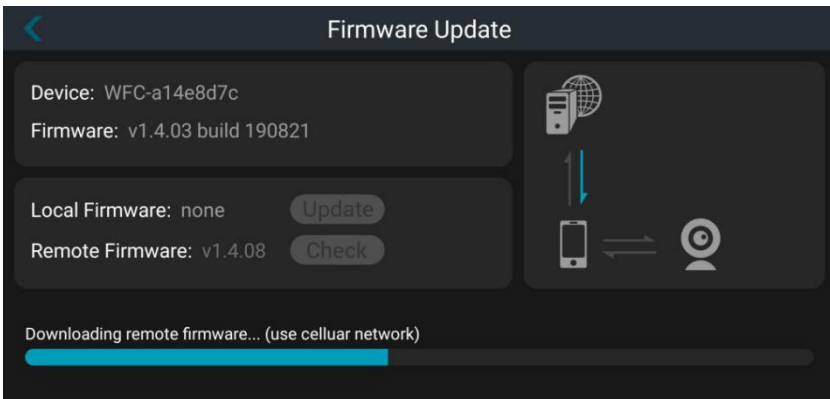
Touch **Check** “StreamVis” will check automatically with the server if there’s new version to be updated after touch “Check”, if so, the system will remind to download the newest version to local or inform that the current version is already the latest version (Please make sure that there’s available network or mobile data). Please keep an eye on the Internet communication link status on the right side of the screen.



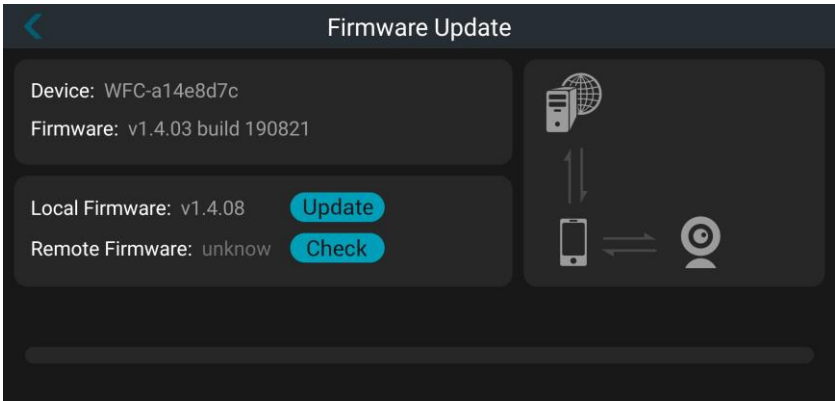
Once detected a latest version for update, "StreamVis" will ask if to download it to local, shown as below:



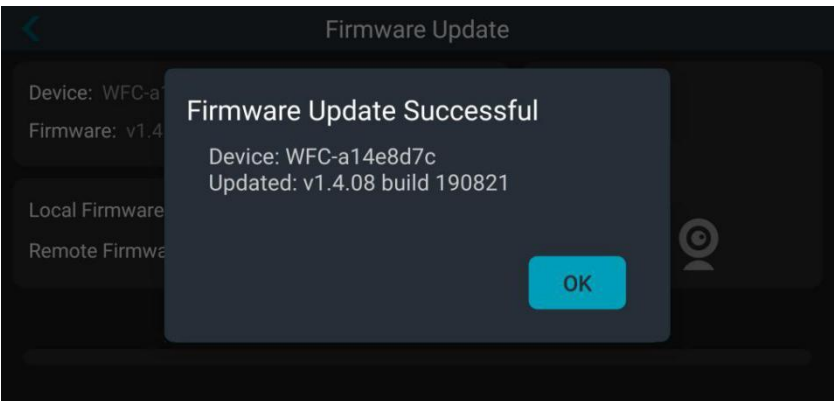
Process of download firmware (Please make sure there's available network or mobile data)



Device can be updated via click **Update** after the firmware is downloaded to phone storage.

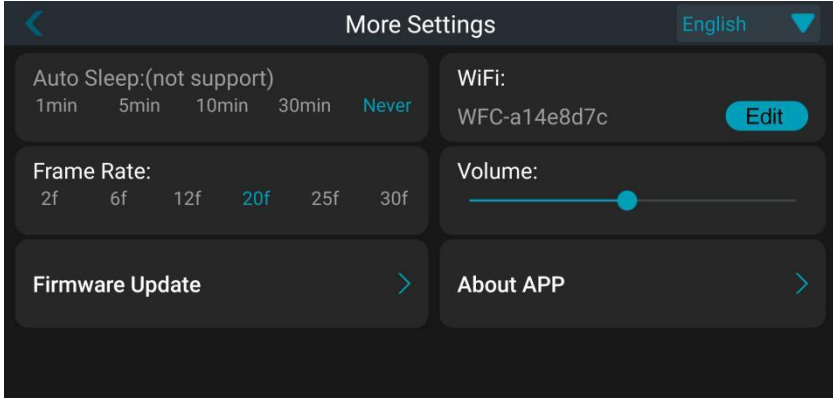


There are 3 phases for update: push firmware package to device, device update and device reboot. Please wait patiently during the process, there will be a reminder that firmware has been updated successfully with the newest version number shown as below.

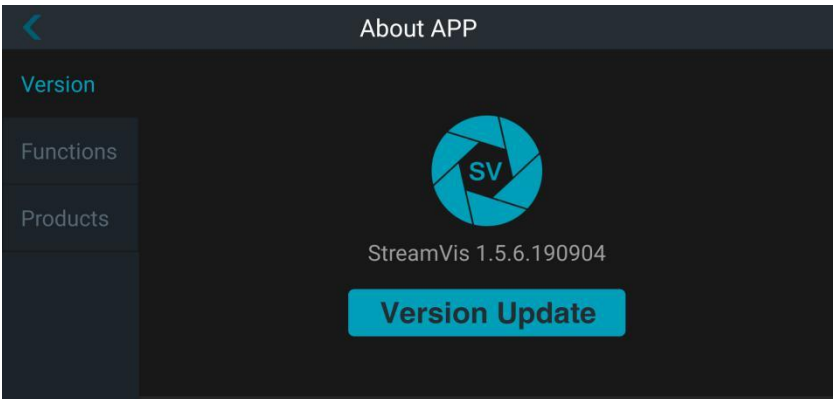


3.5 APP Update

Open “StreamVis” and enter the interface of “More Settings”.



Select “About APP” and enter the interface of “StreamVis”.



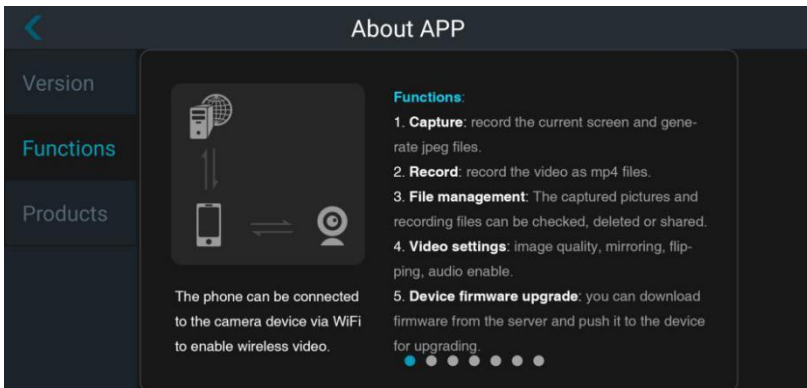
About App information includes StreamVis version, functions, and corresponding wireless products introduction.

(1) Version: Check “StreamVis” software version number (As shown in the picture, StreamVis1.5.6.190904 is version number). Touch

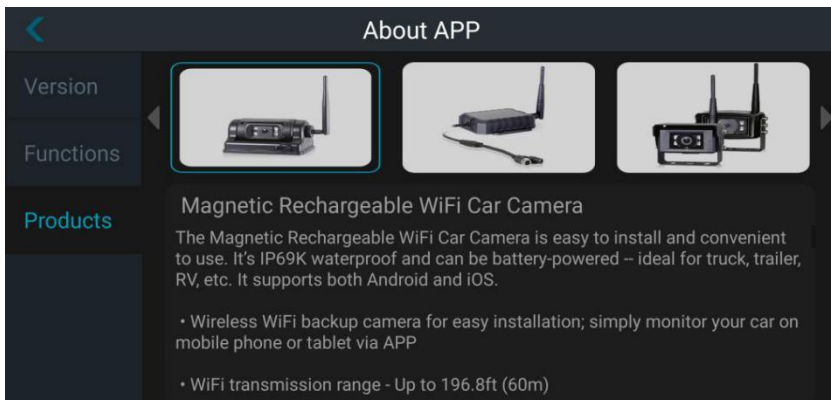
Version Update

to process update. It requires available network for automatic searching to download APP. “StreamVis” will remind that there’s no accessible internet for APP download or update if no available network found. Please make sure that there’s available network or mobile data if update is needed.

(2) Function: It displays main functions of “StreamVis”.



(3) Products: It displays main features and characteristics of Wi-Fi products.

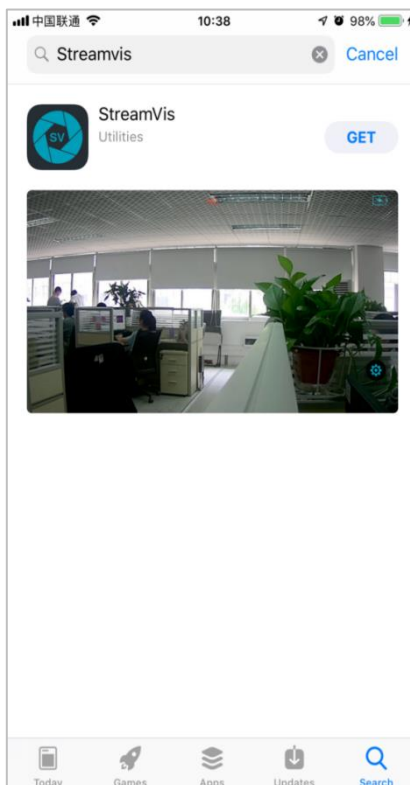


4. App Instructions (for iOS)

4.1 Software Installation

Methods/Steps:

Open “App Store”, search “Streamvis” in the search bar, and touch “GET” to download “StreamVis” .



4.2 Wi-Fi Connection

Methods / Steps:

Use a 10V~32V DC power supply to power the camera to ensure that it is in normal working condition.

Wireless Transmitter hotspot name: WFT-XXX



4.3 Software Operation

Methods/Steps:



Touch the app icon to open “StreamVis”, and the main interface will show up as below.



Tap the screen, and the settings icon will show up.





Tap the settings icon to enter main settings interface with two configuration items: Mirror and Flip.

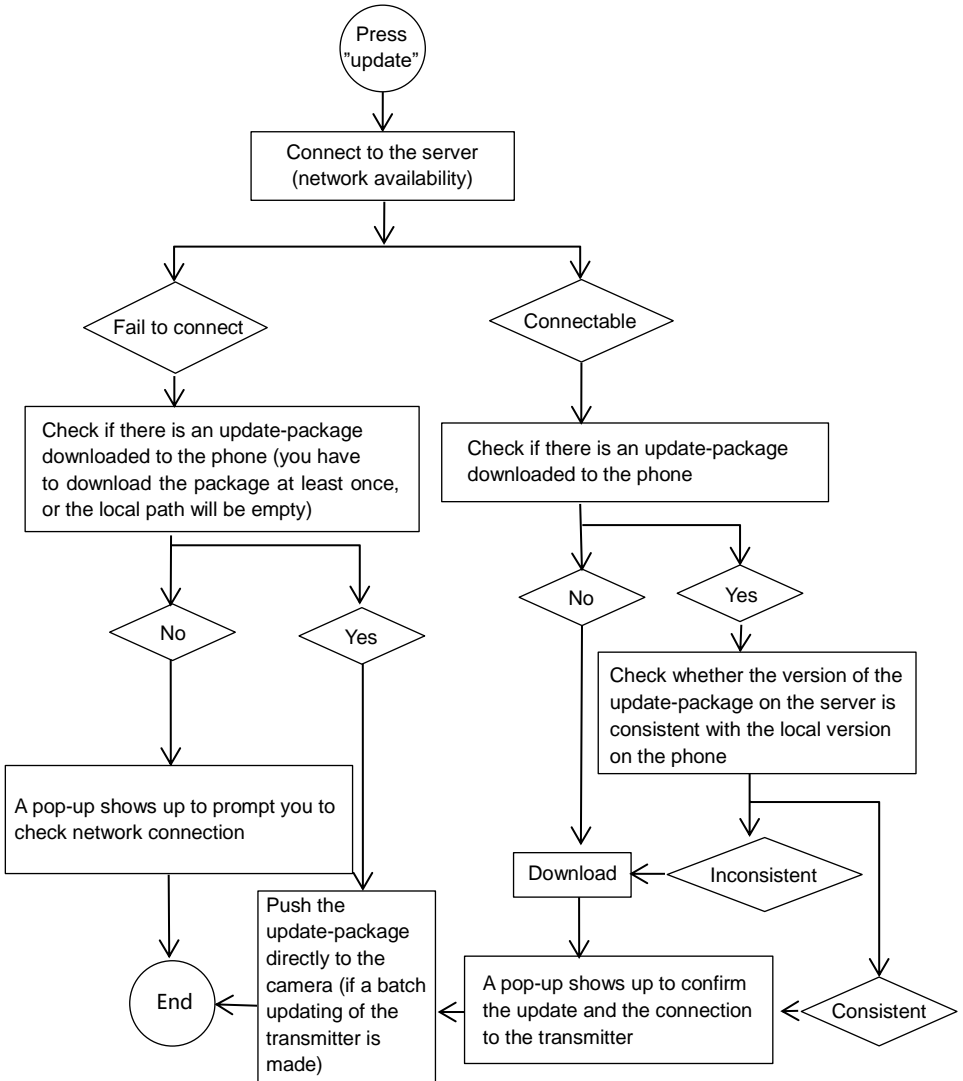


A detailed description of the configuration items is as follows:

- Mirror: ON (to open the mirror image) OFF (to close the mirror image)
- Flip: ON (to flip the screen vertically) OFF (to stop flipping the screen vertically)

4.4 Camera Software Update

4.4.1 Flow Chart



4.4.2 Detailed Process



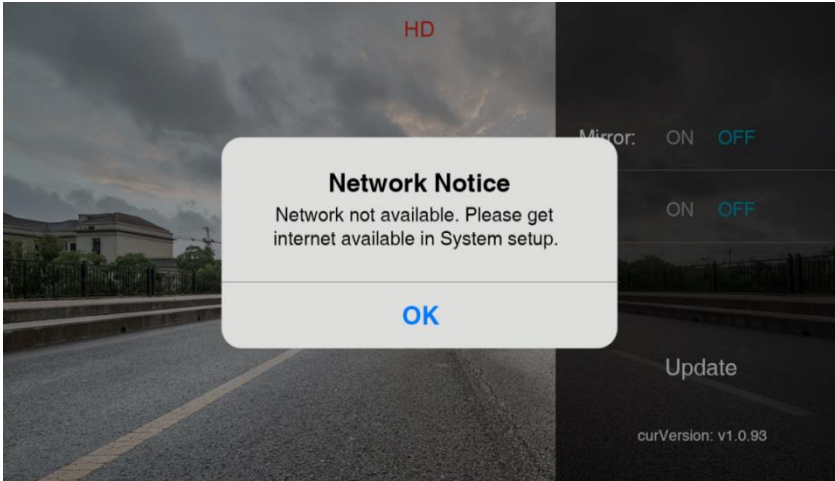
Open “StreamVis” and press the icon to enter the main settings interface. Tap “Update” to start the software update.



First of all, network availability is checked.

If network is unavailable, it will check whether there is an update-package downloaded to the app.

- If there is none, a pop-up will show up to ask for internet connection, and the process ends.

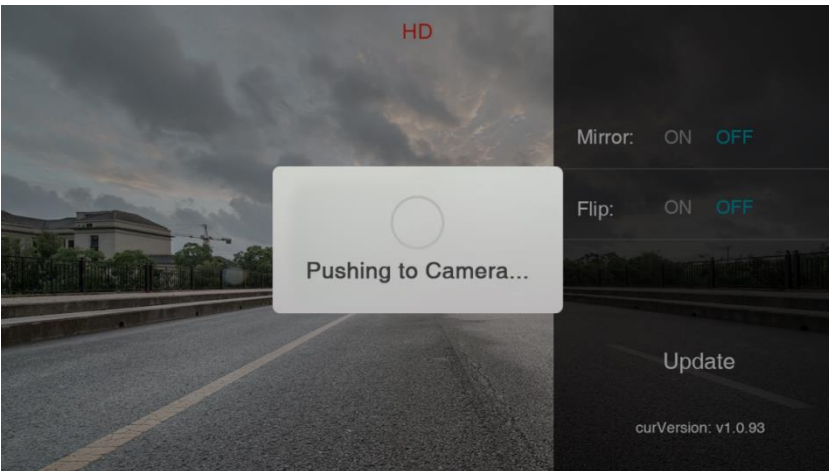


- If an update-package is found, it will prompt you to confirm the information.

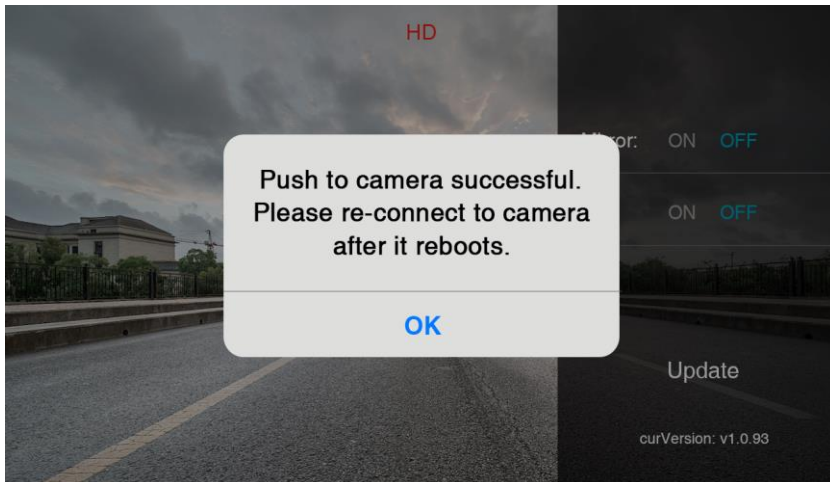
If you tap “Cancel”, the update process will stop.



If you tap “Confirm”, it will push the update-package to the transmitter .

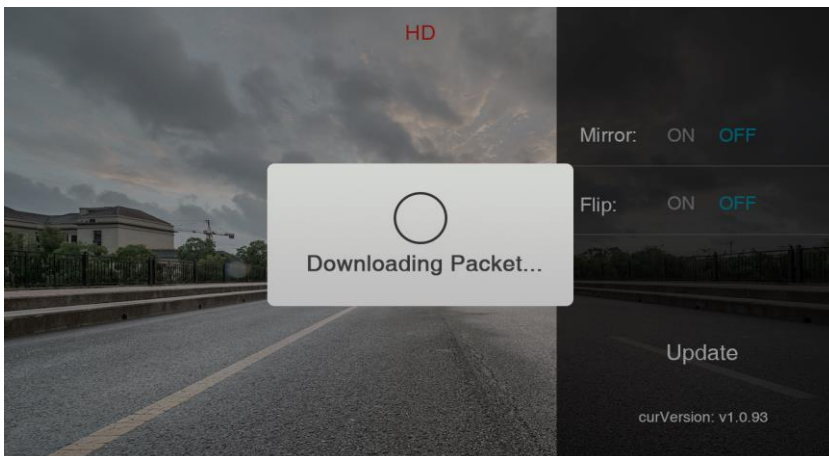


When the update-package is pushed successfully, a pop-up will prompt you to re-connect the app to the transmitter after it reboots.

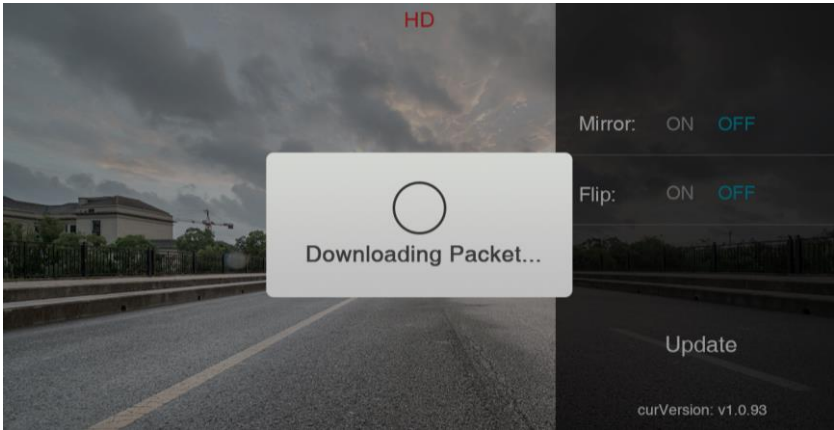


If external network is available, the APP will check if there is an update-package on the APP automatically.

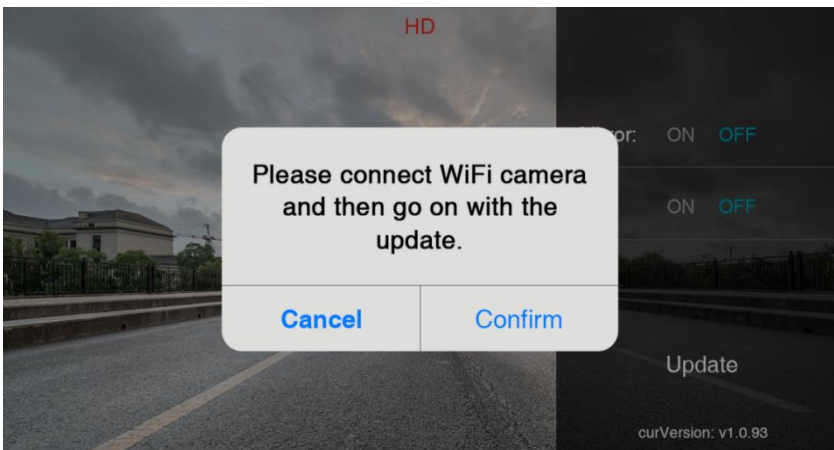
- If there is none, it will start downloading the update-package from the server.



- If yes, the APP will check if the version on the server is consistent with the local one. If it is consistent, the download will stop. If not, it will start downloading the update-package.

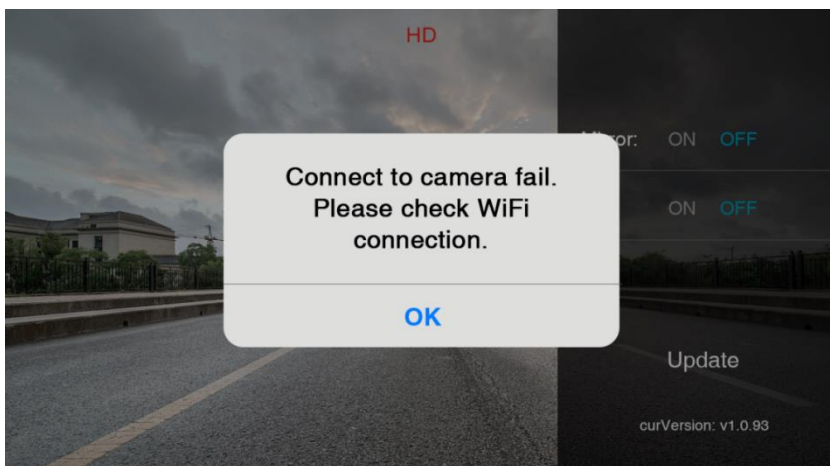


When the download is finished (or the version from the server is the same as the local one), a pop-up will show up to prompt you to re-connect the transmitter. If you tap “Cancel”, the update progress will end. If you want to continue the update, please reconnect the transmitter and tap “Confirm”.

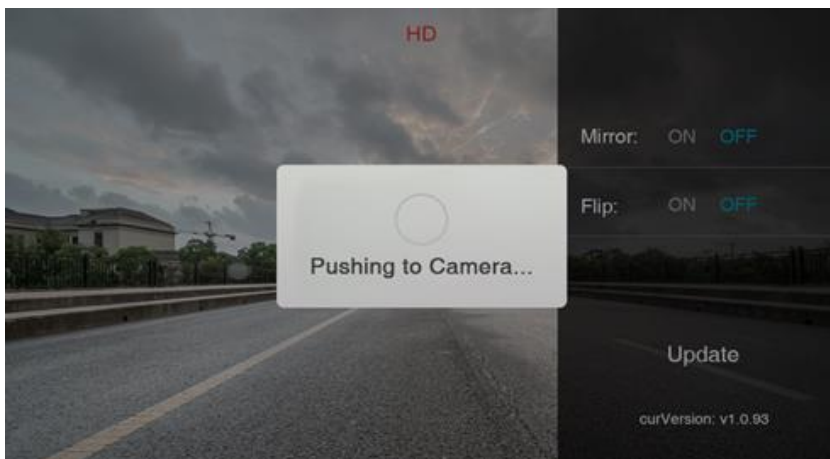




If the phone does not connect to the Wi-Fi of the transmitter, the connection will fail.



If the phone is connected to the transmitter successfully, it will start pushing the update package to the transmitter.



After the update-package is successfully pushed to the transmitter, a pop-up will show up as below:

Tap “OK” and re-connect to the transmitter after it reboots.

